

YUH CHERN

www.challengehardware.com.tw

Forging the Future

SINCE
1979



YUH CHERN MANUFACTURING CO., LTD.

No.336, Dingtai Rd., Wufeng Dist., Taichung City 413, Taiwan (R.O.C.)

Tel:+886-4-2330-7323 Fax:+886-4-2332-5258

Email : service@challengehardware.com.tw

2nd Edition: 2023/6

PRECISE + PROFESSIONAL MANUFACTURING SOLUTIONS

Leading Technologies / Creative Thinking

Total Solution Service

Trustworthy Partner





A SENSE OF SUPERIORITY HOT FORGING

INTEGRATED SERVICES



Company Quality Policy
Customer Satisfaction & Continuous Improvement.



Company Vision
To further our knowledge and skill capabilities as a service provider in the technical fields of forging, stamping and machining.



Company Mission
Through quality services and innovation, provide our customers with the most trusted and technologically advanced products.

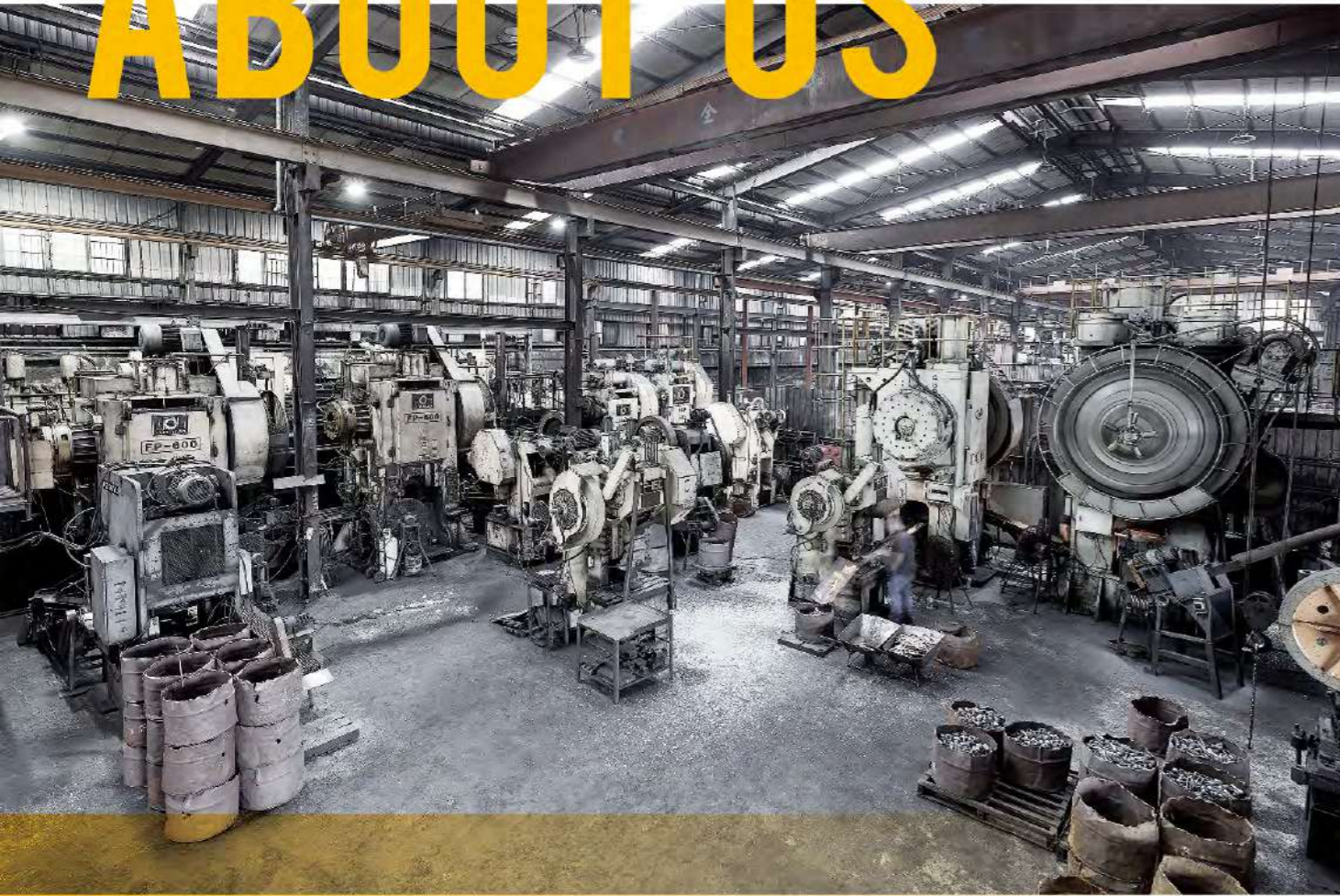


► Conference Room



► Show Room

ABOUT US



▶ Hot Forging Section

The Relentless Pursuit for Perfection

In 1979, Yuh Chern Manufacturing Co. Ltd was established in Taichung County, Taiwan. Since our inception, we have developed a professional hot forging manufacturing service model that focuses on customer specific OEM products.

The evolution of our company and products started with the production of 'Conveyor Chains' and related spare parts. With our advanced factory applications and collaboration with qualified partners, we have gradually expanded into various fields of customized products and services, such as automobile and motorcycle parts, marine parts and mountaineering equipment components.



▶ Shearing Machine



▶ Forging Machine



▶ Stamping Section



▶ Raw Material & Hot Forging Section

We are continuously upgrading our production machinery and equipment. As the scale of our operations continue to grow, we are also upgrading our software and hardware to provide customers with better products and services. Some of the strategic management systems we have implemented are:

- ISO 9001 (Quality Management System)
- ERP (Enterprise Resource Planning System)
- SFT (Factory Production Tracking System)
- PLM (Product Lifecycle Management)
- APS (Advanced Planning and Scheduling System)
- Expansion and recruitment of talented professionals in R&D, Marketing, and Quality departments

We are committed to providing customers with high-quality products and all-aspect servicing, as we move towards fulfilling the company's vision and mission.

MANUFACTURING

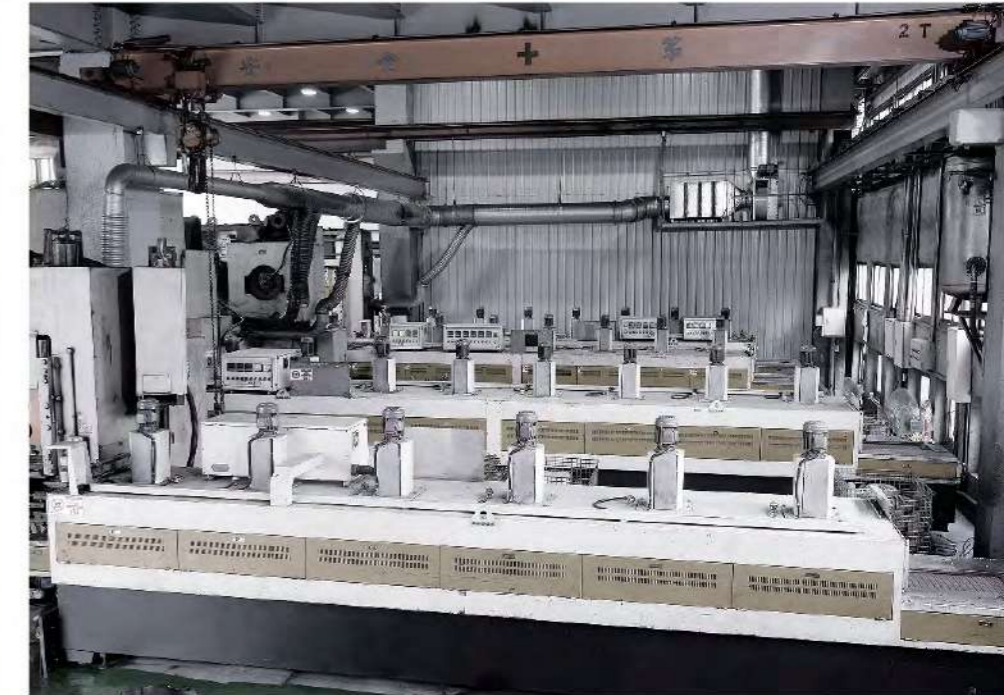
Reliability & Technologies

Yuh Chern consists of two manufacturing facilities: Our mother plant in Taichung covers an area of 2,030 square meters, and our second plant in Nantou occupies an area of 2,640 square meters.

The factory floors are strategically planned out with various manufacturing sections: Forging, Pressing, CNC Machining, Robotic Arm Welding, Riveting, Forming, Assembly, Sand Blasting and Warehousing. We utilize state-of-the-art equipment from well-known brands, such as Jing Duann High-Speed Precision Hot Forging Press, Russian-imported Knuckle Joint Forging Press, Jing Feng and Seyi Stamping Press, Quaser 5-Axis CNC machine, and Extron 3-Axis (with fourth axis) CNC machines



▶ CNC Machining



▶ Aluminum Hot Forging Section



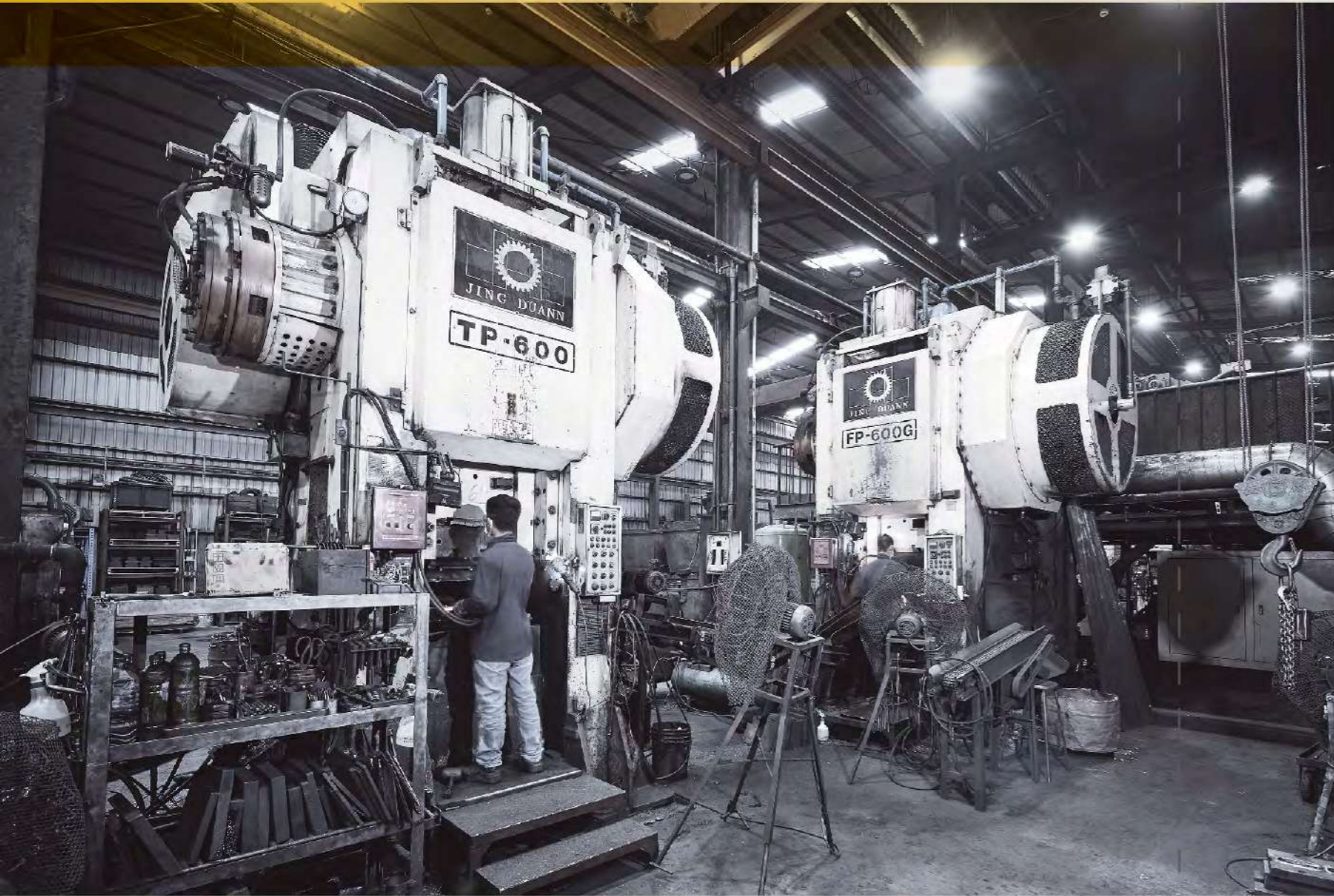
▶ Mold Repair Section



▶ Annealing Furnace



▶ Electric Heater & Infrared Thermometer



► Forging Machine



► Sand Blasting & Anti-Rust Oil Dip Device

Our core manufacturing capabilities include hot and cold forging, stamping, CNC machining, precision casting, and robotic arm welding. We utilize a variety of materials including iron, carbon steel, alloy steel, stainless steel, zinc alloy, aluminum alloy and other composite materials.

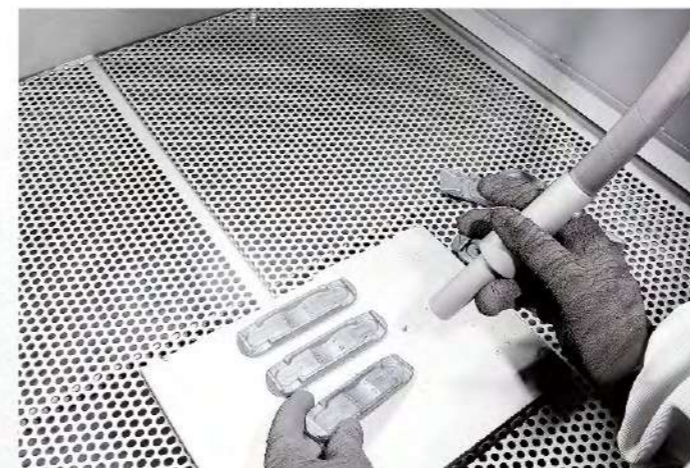
We have incorporated a strategic management approach to operations utilizing ERP (Enterprise Resource Planning), APS (Advanced Planning and Scheduling System), and SFT (Factory Production Tracking System). As a result, we are capable of increasing production efficiency and reduce lead-times.



► CNC Machining

Reliable Brand

The combination of the above-mentioned multi-process capabilities, extensive range of materials, and advanced integration of software and hardware, we can effectively provide a full range of innovation and manufacturing services to meet the specific needs of our customers. Enhancing our drive to become our customers' most trusted provider of technologically advanced products.



► Manual Sand Blasting Machine



► Tooling Storage

RESEARCH & DEVELOPMENT



▶ R&D / QA Department Office

Experience Makes the Difference

Over the years, our Research and Development team has accumulated valuable expertise and decades of experience in product development. This allows us to provide customers with professional technical advice in the early stages of their product's development.

This includes product appearance to material analysis, structure design and surface treatment. We strive to provide the best solutions enhancing our customer satisfaction.

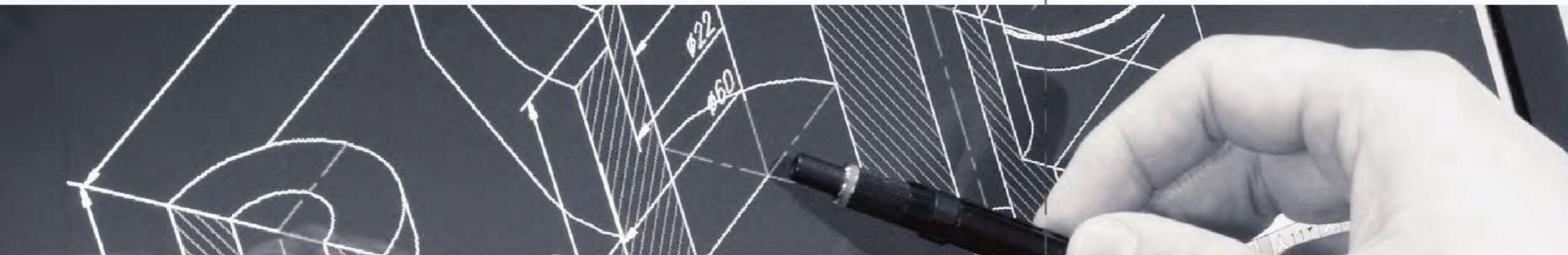
In recent years, with the introduction of information software, such as AutoCAD, Solidworks, Autodesk Inventor, SolidCAM, Cimatron CAD/CAM and Geomagic Design, we have implemented project management processes to fully meet the needs of the development cases. This has allowed us to provide increased Product Development Efficiency and helped customers to shorten the products TTM (time to market) period.

Management Is a Key Factor for A Better Product

Advanced PLM (Product Lifecycle Management) software, allows us to provide customers with a complete solution from design phase, prototypes, mass production, and to final shipment of goods. We are also actively expanding our base of high-quality cross-industry partners to empower our abilities to provide customers with more comprehensive and innovative services & products.



▶ Laboratory



▶ COMET L3D5M Compact 3D Sensor



QUALITY ASSURANCE

▶ 200 Ton Horizontal Tensile Strength Tester



▶ 20 Ton Vertical Tensile Strength Tester

In House Testing Lab

Our dedication to customer satisfaction and quality control has seen constant improvements to testing procedures and testing equipment within our in-house laboratories. Our latest installments of testing equipment include:

- 20-ton & 200-ton tensile testing machines (Chun Yen / CY-6040A & CY-6742)
- 30-ton & 200-ton dynamic fatigue testing machines (Chun Yen / CY-6773A & CY-6537)
- Reverse 3D scanner (Carl Zeiss / Steinbichler / Comet L3D - 5M)
- Surface roughness tester (Mitutoyo / SJ410)
- Digital image magnifying detector
- Rockwell Hardness tester (Zwick / ZHR8150LK)
- 2.5D image measuring instruments (Carmar / VMM-4030C)
- Magnetic particle tester (Karl Deutsch / K+D 700-ACY)
- 3D coordinate measuring machine (Mitutoyo / CRT-AS574)



▶ 2.5D Image Measuring Instrument



▶ 3D Coordinate Measuring Machine



▶ Surface Roughness Tester

Customer Satisfaction

Through the use of sophisticated testing equipment, our company is able to ensure stable and continuous quality improvements and analysis. This dedication to perfection assists us to improve overall product quality and product reliability.



▶ Magnetic Particle Inspection Machine



▶ 200 Ton Dynamic Fatigue Testing Machine



▶ Rockwell Hardness Tester

Best Instrument, Best Quality

In addition to the continuous evolution of our hardware equipment, we have also established a comprehensive quality control process and a professional quality assurance department to ensure the implementation of controlled incoming inspections, first inspections, in-process inspections, and finished-good shipment inspection processes. This further enhances the quality awareness and consistency of the entire factory staff.

Through the use of SPC (Statistical Process Control Software), the production process is monitored continuously, eliminating and avoiding any anomalies, allowing us to achieve our highly set quality assurance goals.



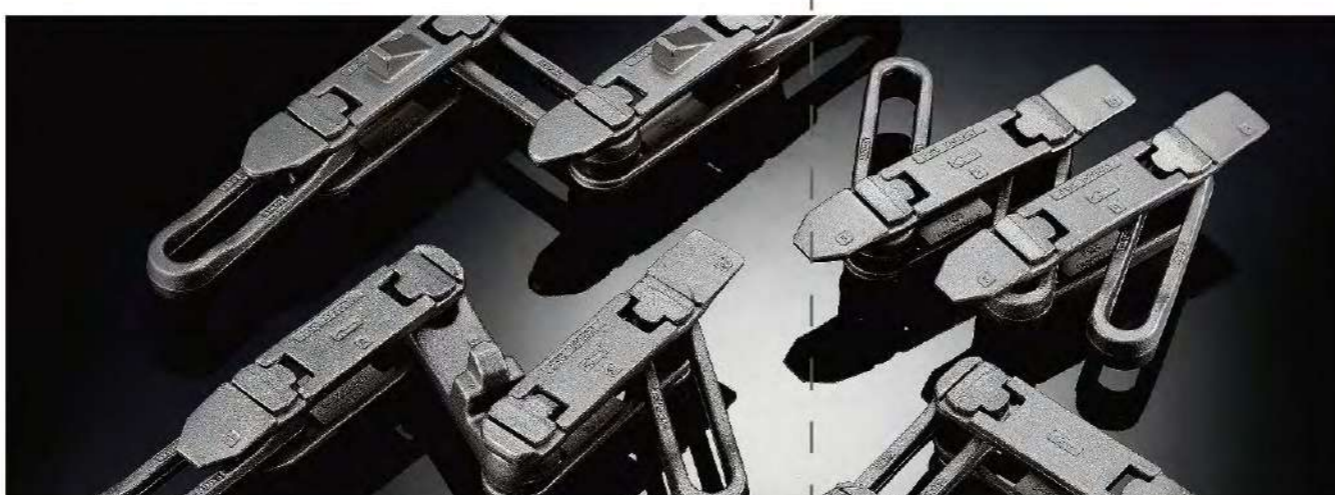
▶ 30 Ton Dynamic Fatigue Testing Machine

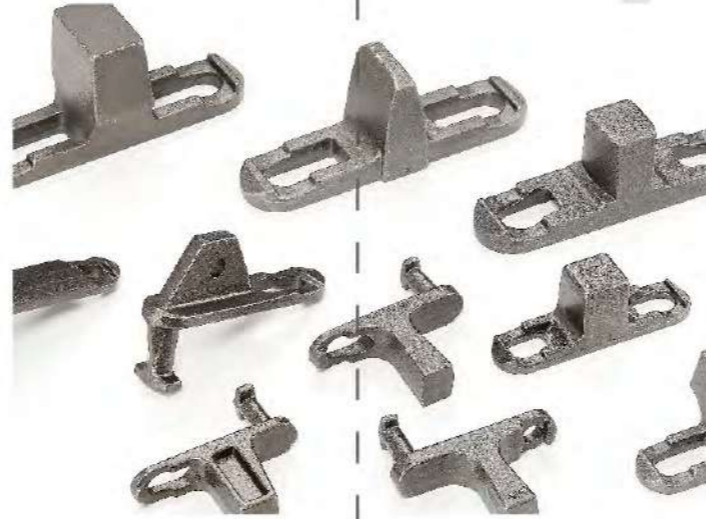


PRODUCT CONVEYOR

Conveying the World

We are market leaders in the production of conveyor chain parts and have been working in this industry for more than three decades. We have on-going business relationships with long-term customers from all over the world and we are a professional OEM partner of major international brands.





Wide Range of Production

Our production capabilities include: Drop Forged Rivetless Chain, Enclosed Track Conveyor Chain, Forged Chain, various types of Industrial Conveyor Chain, Drive Chain, Overhead Trolley, and Free Trolley. Other accessories include complete sets of conveyor system equipment and various custom-made conveyor components. (Please refer to our conveyor chain product catalog.)



PRODUCT TRANSPORTATION INDUSTRY

Top Priority is Safety

Our excellence in product development has seen our production capabilities diversify into various fields including the Transportation Industry. We have developed numerous after-market Motor Vehicle spare parts, Trailer parts and other parts within the transportation industry that require the highest level of quality and satisfy stringent safety standards.

We acknowledge the need for such precision and quality standards; therefore we work with our customers at product inception stages to create production procedures that will eliminate product inefficiencies. We utilize testing procedures to guarantee our products. For example, 2 million cycle fatigue testing and the use of spectrometers to confirm the material strength of each part. We use Optical Scanners and 3D measuring instruments to guarantee and confirm that the dimensions and specifications are consistent and precise. These processes reflect our commitment to excellence and customer satisfaction.





PRODUCT

OEM & ODM



We continue to upgrade our equipment and enhance our ability to provide new advanced technological processes to realize our vision to become one of the world's best-integrated suppliers in the fields of forging, stamping and machining. We are committed to continue to diversify our product development skills into wider industries, such as mountaineering equipment, shipbuilding, sports equipment, construction parts (doors and windows) and other custom-made products.

